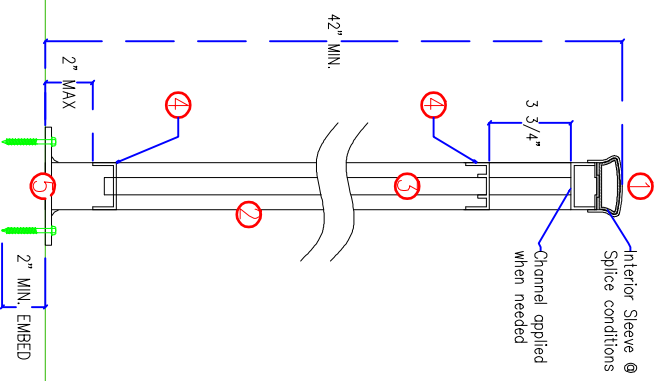


- Material**
- 1) See Top Cap Styles
 - 2) 1 1/2" or 2" SQ. x .093 (Depends on cap selection)
 - 3) 3.4" SQ. x .0625 pickets
 - 4) 2" x 1" x .125 punched channel
 - 5) 5" x 5" x 1/4" Flange Plate
 - 6) 1" x 2" x 1/8" rectangular tube

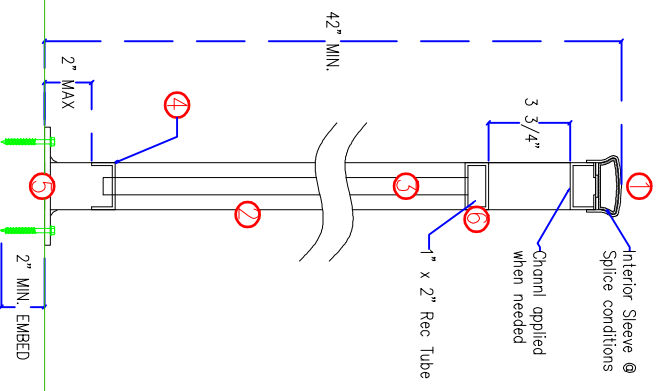
See web site for many different Frieze options
www.seoic.com

- Notes:**
- 1) Material: EXTRUDED ALUMINUM GRADE 6000 SERIES T5 OR T6 AS AVAILABLE
 - 2) FABRICATION: ALL RAIL SECTIONS TO BE WELDED.
 - 3) FINISH: ALL PRODUCTS TO BE POWDER COATED STANDARD COLOR UNLESS OTHER FINISHING METHOD IS REQUIRED.

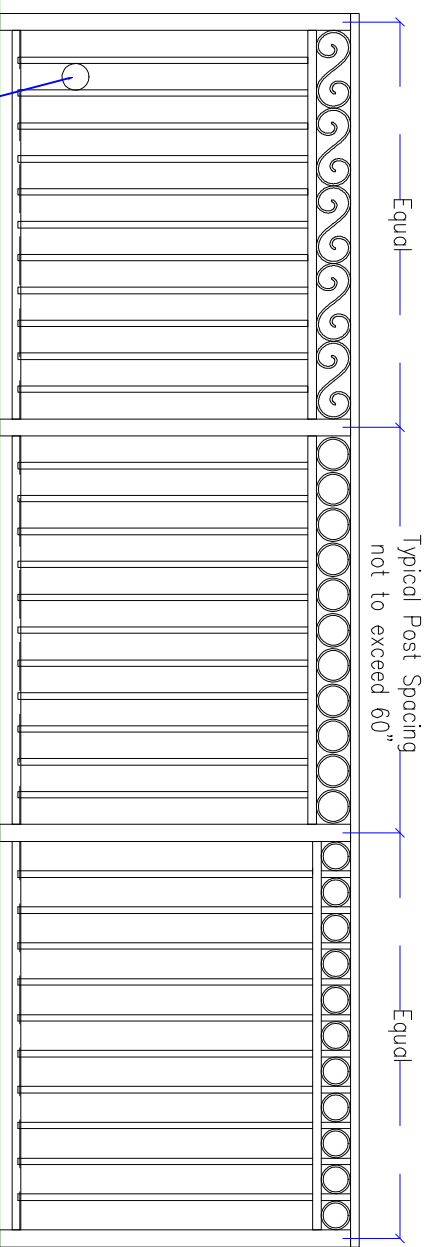
See web site for many different Frieze options
www.seoic.com



Typical Three Rail Detail

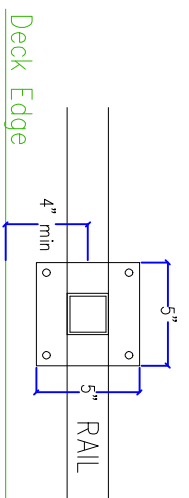


Typical Frieze Detail



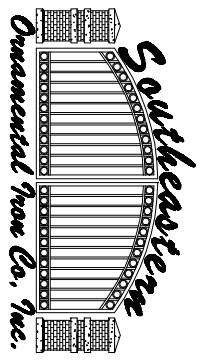
Typical Railing with Frieze

(This design may require to trim or omit end rings in order to meet code requirements)



Rail From Deck Edge

See "Mounting Styles" for other options



SEO - Frieze_Rail

11307 Distribution Ave East
 Jacksonville, FL 32256
 904-292-0933 ph.
 904-292-0588 fax